

UE

gNB

pixel_6a.pcap

RRC Setup Request

ID RNTI	0x4601
LCID	CCCH (48 bits)
Random	26c0de9082
Cause	mo-Signalling
LCID	Padding

[Frame 1] RRC Setup Request – Msg3 over CCCH; UE asks gNB to establish RRC connection

RRC Setup

ID RNTI	0x4601
LCID	UE Contention Resolution Identity
LCID	CCCH
Trans ID	0
SRB add	1
CellGroup	0
SRB add	1
RLC mode	AM
T-PollRetx	ms45
maxRetx	t8
T-Reassembly	ms35
T-StatusProhibit	ms10
SR-TransMax	n64
periodicBSR	sf20
retxBSR	sf320...
	6 more

[Frame 2] RRC Setup – Msg4 payload carrying SRB1 config; UE moves to RRC_CONNECTED on receipt

RRC Setup Complete

ID RNTI	0x4601
SRB	1
Trans ID	0
PLMN idx	1
NAS	7e004179000d0100...
NAS msg	Registration request

[Frame 3] RRC Setup Complete – UE acks SRB1 and piggybacks an initial NAS message to the AMF

RRC Setup Complete

ID RNTI	0x4601
SRB	1
Trans ID	0
PLMN idx	1
NAS	7e004179000d0100...
NAS msg	Registration request

RRC Setup Complete

ID RNTI	0x4601
SRB	1
Trans ID	0
PLMN idx	1
NAS	7e004179000d0100...
NAS msg	Registration request
NAS Reg type	initial registration
NAS Mobile ID	SUCI

DL Information Transfer

ID RNTI	0x4601
SRB	1
Trans ID	1
NAS	7e00560102000021...

[Frame 5] DL Information Transfer – transparent NAS container from AMF/SMF to UE

UL Information Transfer

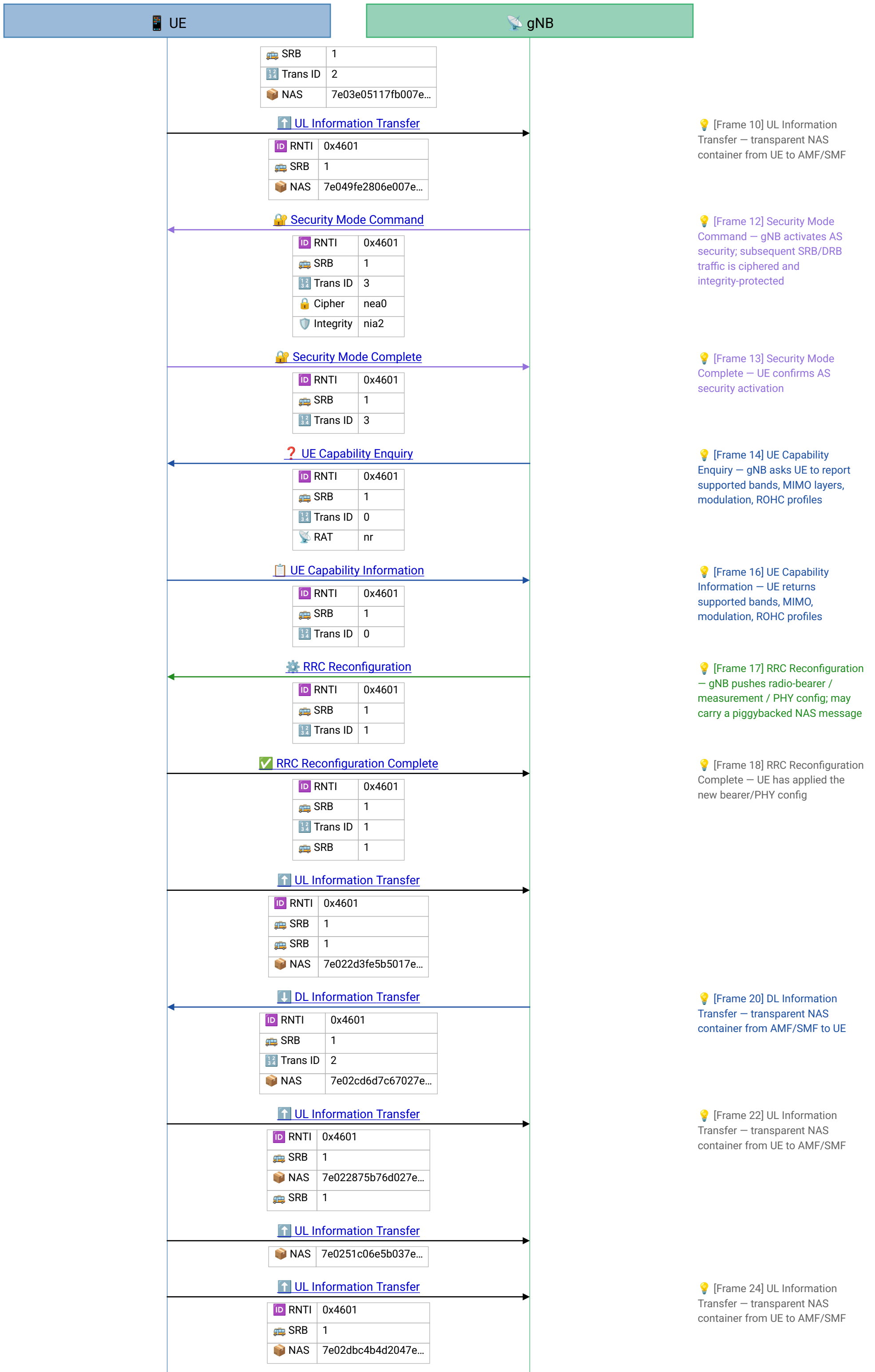
ID RNTI	0x4601
SRB	1
NAS	7e00572d10b729dd...

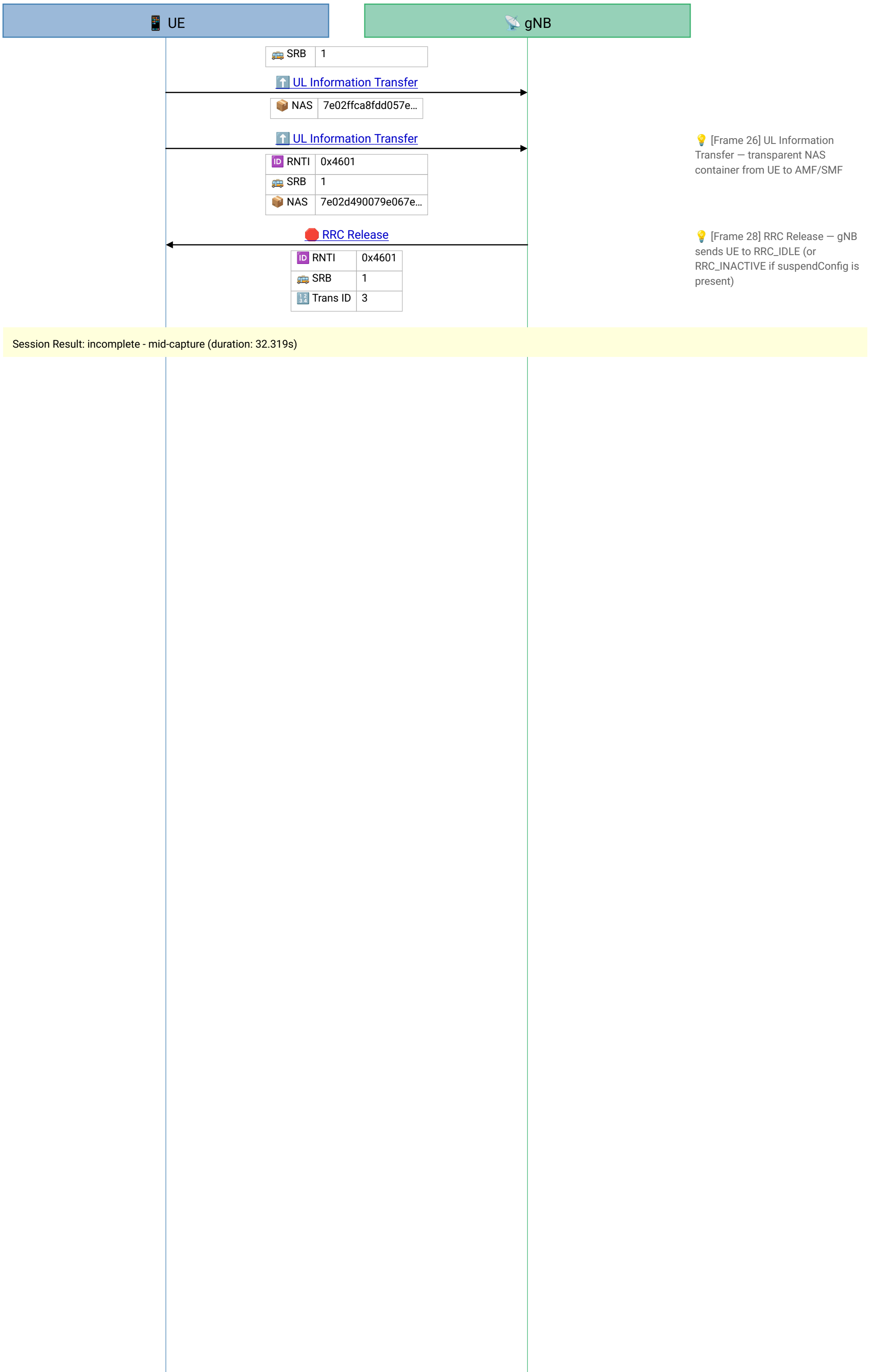
[Frame 7] UL Information Transfer – transparent NAS container from UE to AMF/SMF

DL Information Transfer

ID RNTI	0x4601
---------	--------

[Frame 9] DL Information Transfer – transparent NAS container from AMF/SMF to UE





Session Result: incomplete - mid-capture (duration: 32.319s)